



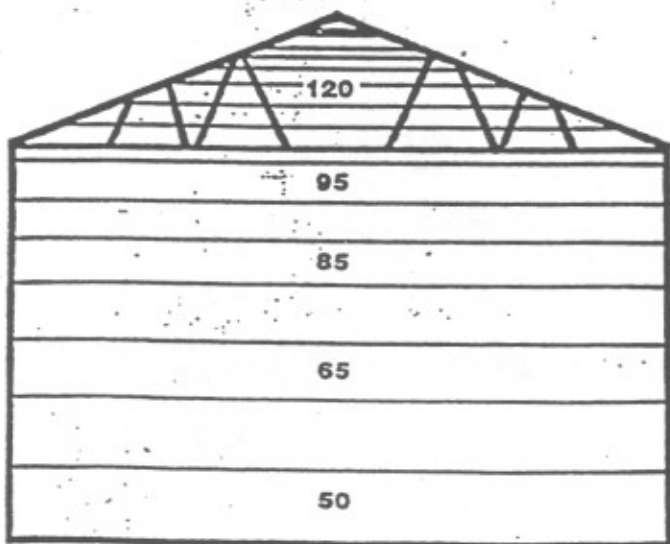
A SIMPLE CONCEPT . . . AN ECONOMICAL OPERATION

It's a simple concept. The vertical turbulent pattern of air flow from Agri-fans provides benefits in all seasons. In hot weather, Agri-fans create a mild wind chill and cause evaporative cooling for livestock, poultry and people, helping to keep production up and stress down. Air movement from Agri-fans also help to break up the "heat barrier", equalizing temperatures and moving air throughout the area.

The larger intake fans being used in agricultural buildings are mainly confined to the "intake" and "exhaust" of a high volume of moisture laden air and move the air horizontally in the buildings in which they are installed.

Northwest Agri-fans are ceiling fans and operate on a completely different principle. Agri-fans move larger volumes of air vertically over livestock and through the entire building. The result? A healthier, cooler and more consistent environment all year long.

... cold weather, at lower speeds, Agri-fans mix the air and eliminate the layer of warm air near the cold

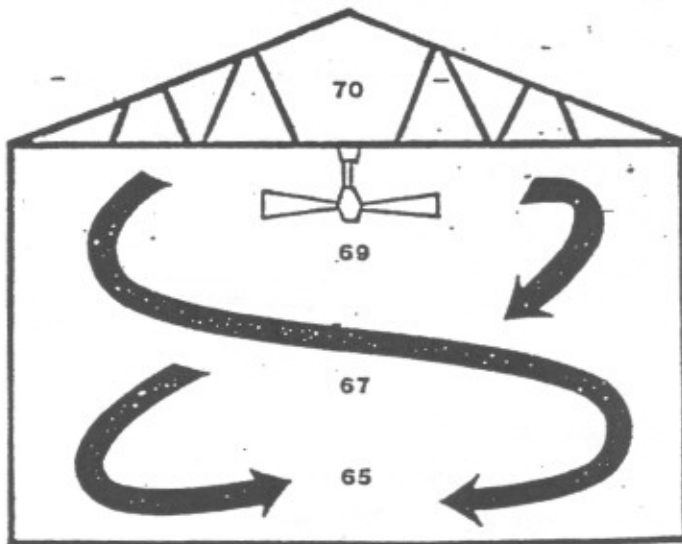


STRATIFIED HEAT — Because hot air rises, it causes temperature differences at various room levels in cold weather, causing cold floors and condensation. In hot, humid weather, lack of sufficient air movement causes heat stress and moisture.

roof. This greatly reduces or prevents the condensation that forms and "hangs" from the roof, dripping on animals, poultry, bedding and surfaces below. Because heat rises, Agri-fans also push heat or body heat down to floor level, equalizing the temperature throughout the building, eliminating "cold pockets".

In all seasons, Agri-fans, which can move air up to 24,000 CFM, help to disperse fumes and dust from indoor pens and buildings and also help to keep bedding, litter and floors drier.

The cost of running an Agri-fan system is unusually small; one Agri-fan, installed for up to every 2400 square feet, uses less energy than a 100 watt light bulb. Besides costing so little to operate, Agri-fans give fast payback with benefits to environment and production. Agri-fans make sound operating sense. Used with existing heating/cooling systems, Agri-fans bring efficient, effective solutions to current and future livestock and poultry care problems.



THE AGRI-FAN SOLUTION — Agri fan mixes stratified air, forcing warmer air down to floor level, also reducing condensation. Continuous vertical, turbulent air movement speeds drying of floors, bedding, walls and ceilings in all seasons, and cools livestock, poultry and people in summer.

BANVIL 2000

Local Telephone: (905) 878-0272

Distributed By:

Local Fax: (905) 878-0272